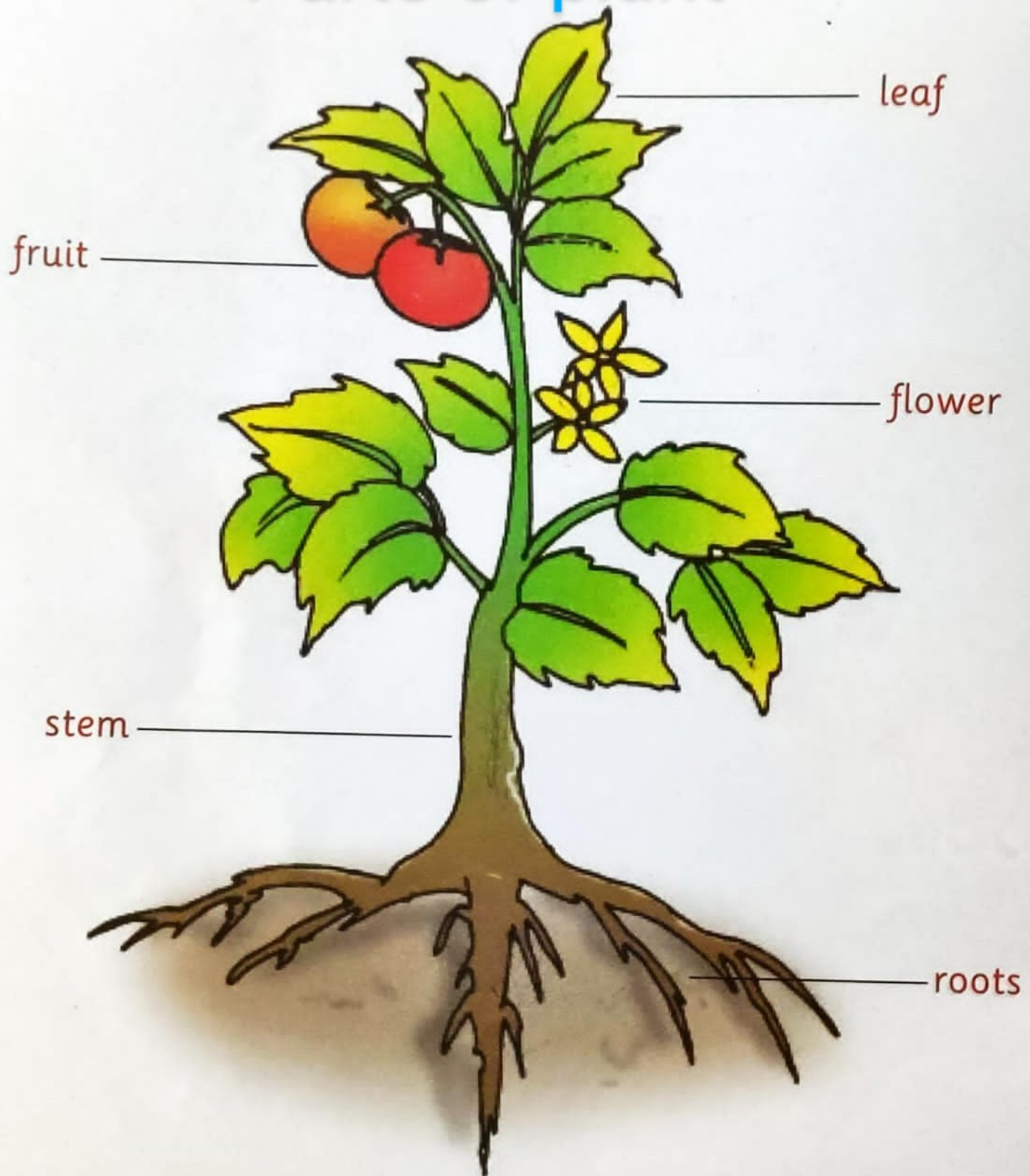


# Parts of plant



# ST. MARY'S KINDERGARTEN DIAMOND PARK

CLASS- LKG  
DATE- 6/JAN/2022.

DAY- THURSDAY.  
SESSION- 2021-22.

SUBJECT- GK

TOPIC- LEARN THE QUESTION-ANSWER GIVEN BELOW.

**Q.1- NAME 4 DIFFERENT TYPES OF PLANTS AND TREES.**

**A- ROSE PLANT,  
SUNFLOWER PLANT,  
MANGO TREE,  
NEEM TREE.**

**\*PARTS OF A PLANTS\***

**Q.2- NAME 5 PARTS OF PLANTS.**

**A- ROOTS,  
STEM,  
LEAF,  
FLOWER,  
FRUIT.**

**Q.3- NAME ONE COLOURFUL PART OF A PLANT.**

**A- FLOWER.**

**Q.4- NAME ONE PART OF A PLANT WHICH IS GREEN IN COLOUR.**

**A- LEAF.**